

EMERGENCY TRANSFER CABINET



FEATURES

- Self contained pre-wired transfer cabinet
- Used to maintain essential lighting for safety in public places
- Voltage sensing of normal lines
- Automatic transfer of load circuits from normal to emergency source
- Automatic re-transfer on restoration of normal supply
- Suitable for transferring circuits on a phase controlled (dimmed) supply
- CSA approved

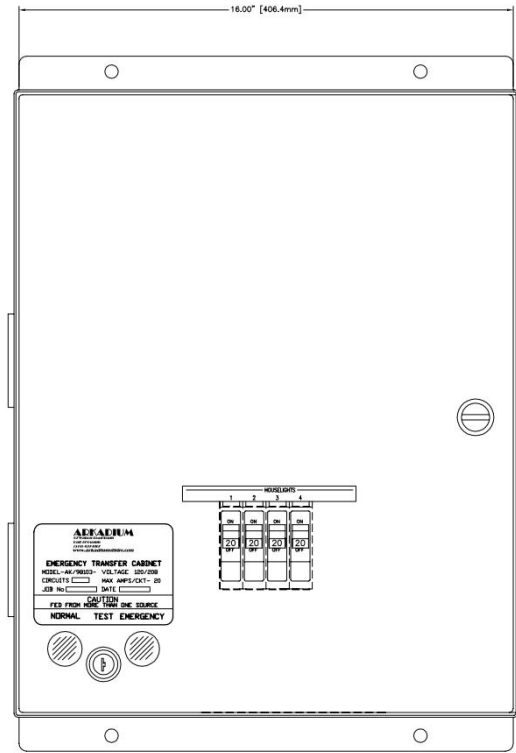
APPLICATION USES

Public spaces such as

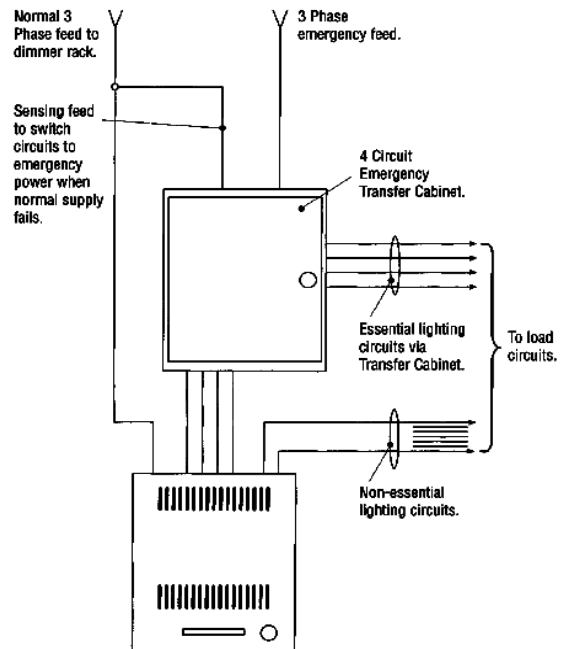
- hotel conference areas
- office buildings
- theatre and concert hall house lighting

A GUIDE TO THE EMERGENCY TRANSFER CABINET

The Emergency Transfer Cabinets are a cost effective range of automatic transfer switches. They are designed for any application where power to lighting circuits must be maintained during a loss of normal power. Emergency Transfer Cabinets are available for 3-phase 5 wire 120/208 volt emergency power feeds. 3-phase cabinets include a 20A branch breaker for each load circuit.



EMERGENCY TRANSFER CABINET TYPICAL SCHEMATIC



ARKADIUM

449 Laird Road, Unit #3

Guelph, Ontario N1G 4W1

Tel: (519) 837-8367 Fax: (519) 837-2487 www.arkadiumdistro.com

The Company reserves the right to make any variation in design or construction to the equipment described.

EMERGENCY TRANSFER CABINET

ARKADIUM

MECHANICAL

Cabinets shall be of sheet steel construction of no less than 16 gauge and shall be wall mounted .

Cable entry points shall be via the top, side and bottom panels of the cabinet.

All terminations and internal wiring shall be accessible via a hinged latched door or front cover.

Emergency Transfer Cabinets shall be convection cooled and shall maintain the temperature range defined in the Environmental Specification. Fans shall not be required.

The cabinet shall be finished in powder coat semi-gloss light grey paint.

ELECTRICAL

The Emergency Transfer Cabinets shall comprise voltage sensing circuitry and transfer switches to automatically transfer load circuits from the normal to the emergency power feed's) when the normal supply fails.

The Emergency Transfer Cabinets shall be designed for use with 120/208 volt 3 phase 5 wire dimmer cabinets of building services (

Emergency Transfer Cabinets for 3 phase emergency power feeds shall have a 20A magnetic branch breaker per load circuits. Breakers shall be rated for a minimum of 10,000A interrupting capacity.

On restoration of the normal supply, load circuits shall be transferred from the emergency feed's) to the normal supply automatically.

ENVIRONMENTAL SPECIFICATION

For Emergency Transfer Cabinets and associated equipment the following recommendations shall apply

Ambient Temperature Extremes
32-104° Fahrenheit (0-40° C)

Relative Humidity
10-90% non-condensing

General conditions use only

Office level cleanliness—interior

DOCUMENTATION

System riser and connections drawings shall be supplied as specified. Installation instructions shall be supplied with each Emergency Transfer Cabinet.

ARKADIUM

449 Laird Road, Unit #3

Guelph, Ontario N1G 4W1

Tel: (519) 837-8367 Fax: (519) 837-2487 www.arkadiumdistro.com

The Company reserves the right to make any variation in design or construction to the equipment described.

EMERGENCY TRANSFER CABINET

ARKADIUM

ORDERING INFORMATION – 3PHASE

CAT NO.	DESCRIPTION
AK/98003-02SP	Three phase EM Feed – 2 circuit of EM
AK/98003-04SP	Three phase EM Feed – 4 circuit of EM
AK/98003-06SP	Three phase EM Feed – 6 circuit of EM
AK/98003-08SP	Three phase EM Feed – 8 circuit of EM
AK/98003-10SP	Three phase EM Feed – 10 circuit of EM
AK/98003-12SP	Three phase EM Feed – 12 circuit of EM
AK/98003-14SP	Three phase EM Feed – 14 circuit of EM
AK/98003-16SP	Three phase EM Feed – 16 circuit of EM
AK/98003-18SP	Three phase EM Feed – 18 circuit of EM
AK/98003-20SP	Three phase EM Feed – 20 circuit of EM
AK/98003-22SP	Three phase EM Feed – 22 circuit of EM
AK/98003-24SP	Three phase EM Feed – 24 circuit of EM

DIMENSIONS AND WEIGHT

DESCRIPTION	HEIGHT	WIDTH	DEPTH	WEIGHT (APROX.)
For 1-4 relays	16"	12"	7"	40 lbs.
For 5-8 relays	20"	24"	7"	75 lbs
For 9-12 relays	24"	30"	7"	100 lbs
For 13-18 relays	24"	36"	7"	150 lbs
For 19-24 relays	30"	36"	9"	225 lbs

ARKADIUM

449 Laird Road, Unit #3

Guelph, Ontario N1G 4W1

Tel: (519) 837-8367 Fax: (519) 837-2487 www.arkadiumdistro.com

The Company reserves the right to make any variation in design or construction to the equipment described.