

**NOTES**

- (1) RATINGS ARE ONLY APPLICABLE FOR USE WITH ARKADIUM AK-ALM-CMT CHANNEL MOUNT AND SH HANGER SYSTEM
- (2) RATINGS ARE ONLY APPLICABLE FOR USE WITH ARKADIUM JOIST HANGER AK/9215001-15 OR I BEAM HANGER AK/9215002-15
- (3) ALUMINUM CHANNEL IS NOT LOAD RATED. ONLY HANG FIXTURES FROM PIPE
- (4) TORQUE ALL HARDWARE TO RECOMMENDED RATINGS
- (5) MID SPAN SUPPORT HANGERS FOR ALUMINUM CHANNEL ARE REQUIRED FOR SPANS OVER 6'
- (6) ARKADIUM IS NOT RESPONSIBLE FOR FINAL ASSEMBLY
- (7) SPLICE REQUIRED FOR LENGTHS LONGER THAN 15' (4.5m)

LOADING CHART		
(sch 40 steel pipe)		
SPAN A	lbs/ft (kg/m)	
6'/1800mm	125	(56)
8'/2440mm	70	(31)
10'/3040mm	44	(20)



THIS DRAWING IS THE PROPERTY OF ARKADIUM INC. ANY USE/AND OR REPRODUCTION OR THE DESIGNS CONTAINED HEREIN WITHOUT WRITTEN CONSENT OF ARKADIUM INC IS PROHIBITED. ARKADIUM IS NOT RESPONSIBLE FOR THE UNAUTHORIZED USE AND/OR ALTERATION OF THIS DRAWING OR THE DESIGNS CONTAINED WITHIN. THE DRAWING IS SUBJECT TO REVIEW AND FINAL APPROVAL BY THE PROJECTS ARCHITECT AND/OR ENGINEER.

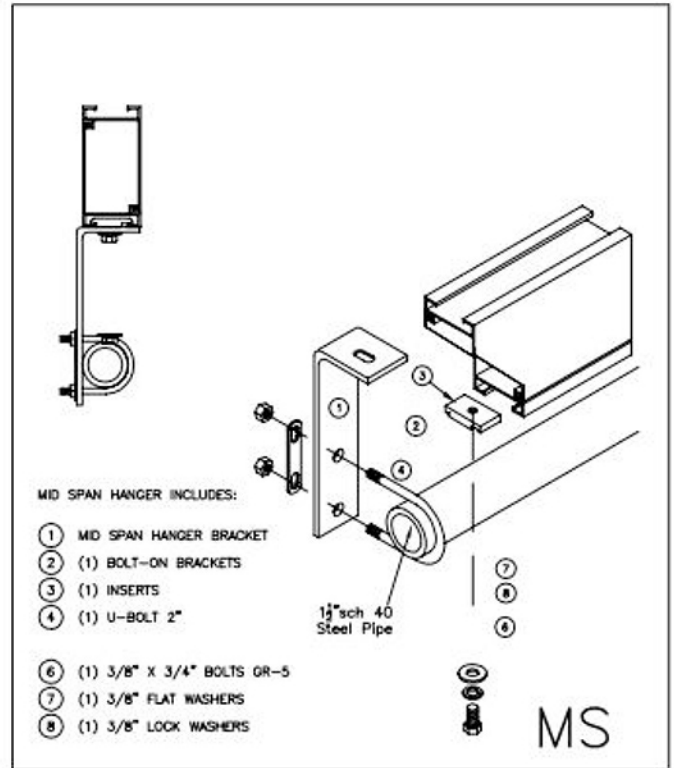
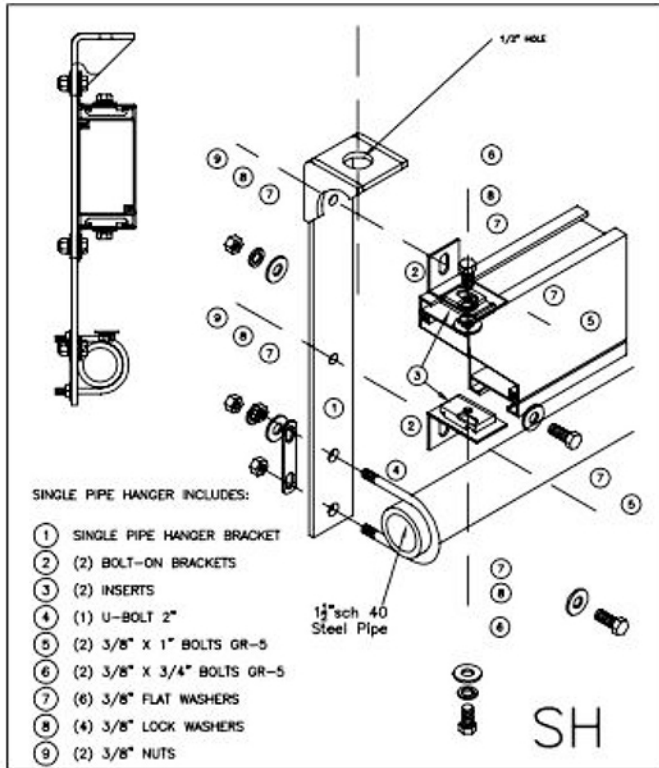
**ARKADIUM**

449 Laird Road, Unit #3,  
Guelph, Ontario  
N1G 4W1

519-837-8367  
519-837-2487 (fax)

DRAWN BY:	TITLE	SHEET
	SYSTEM SYSTEM	JOB #
DATE	<i>CHANNEL MOUNT LOAD RATINGS</i>	
May 2007		
SCALE		
NTS		

# INSTALLATION NOTES



Attach Bolt on Brackets [2] to channel at Drop and Mid Span Locations using Inserts [3] and Bolt Assembly [6,7,8] (Assure Insert [3] is properly seated in Channel)

Attach SH and MH Hangers to channel at Drop and Mid Span Locations using Bolt Assembly [5,7,8,9] (Assure SH Hangers Match up with Drop Locations)

Attach 1 1/2" sch 40 Pipe to Hangers using U-Bolt Assembly [4]

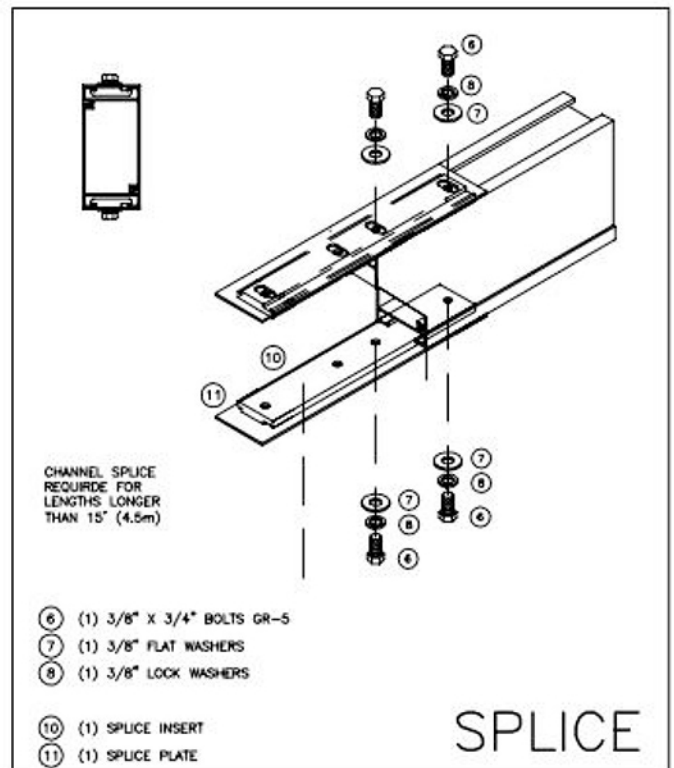
True all Components and Evenly Tighten Hardware (DO NOT TORQUE)

Hang Channel Mount Assembly on Drop Points using Screw Pin Shackles

Hang Channel Mount Assembly on Drop Points using Screw Pin Shackles

Check Trueness of Components and Tighten Hardware to Recommended Torque

Trim Bottom Point (see below)



THIS DRAWING IS THE PROPERTY OF ARKADIUM INC. ANY USE/AND OR REPRODUCTION OR THE DESIGNS CONTAINED HEREIN WITHOUT WRITTEN CONSENT OF ARKADIUM INC IS PROHIBITED. ARKADIUM IS NOT RESPONSIBLE FOR THE UNAUTHORIZED USE AND/OR ALTERATION OF THIS DRAWING OR THE DESIGNS CONTAINED WITHIN.THE DRAWING IS SUBJECT TO REVIEW AND FINAL APPROVAL BY THE PROJECTS ARCHITECT AND/OR ENGINEER.

**ARKADIUM**

449 Laird Road, Unit #3,  
Guelph, Ontario  
N1G 4W1

519-837-0367  
519-837-2487 (fax)

DRAWN BY:

TITLE CHANNEL MOUNT HANGER ASSEMBLY  
SYSTEM SYSTEM

SHEET SHT

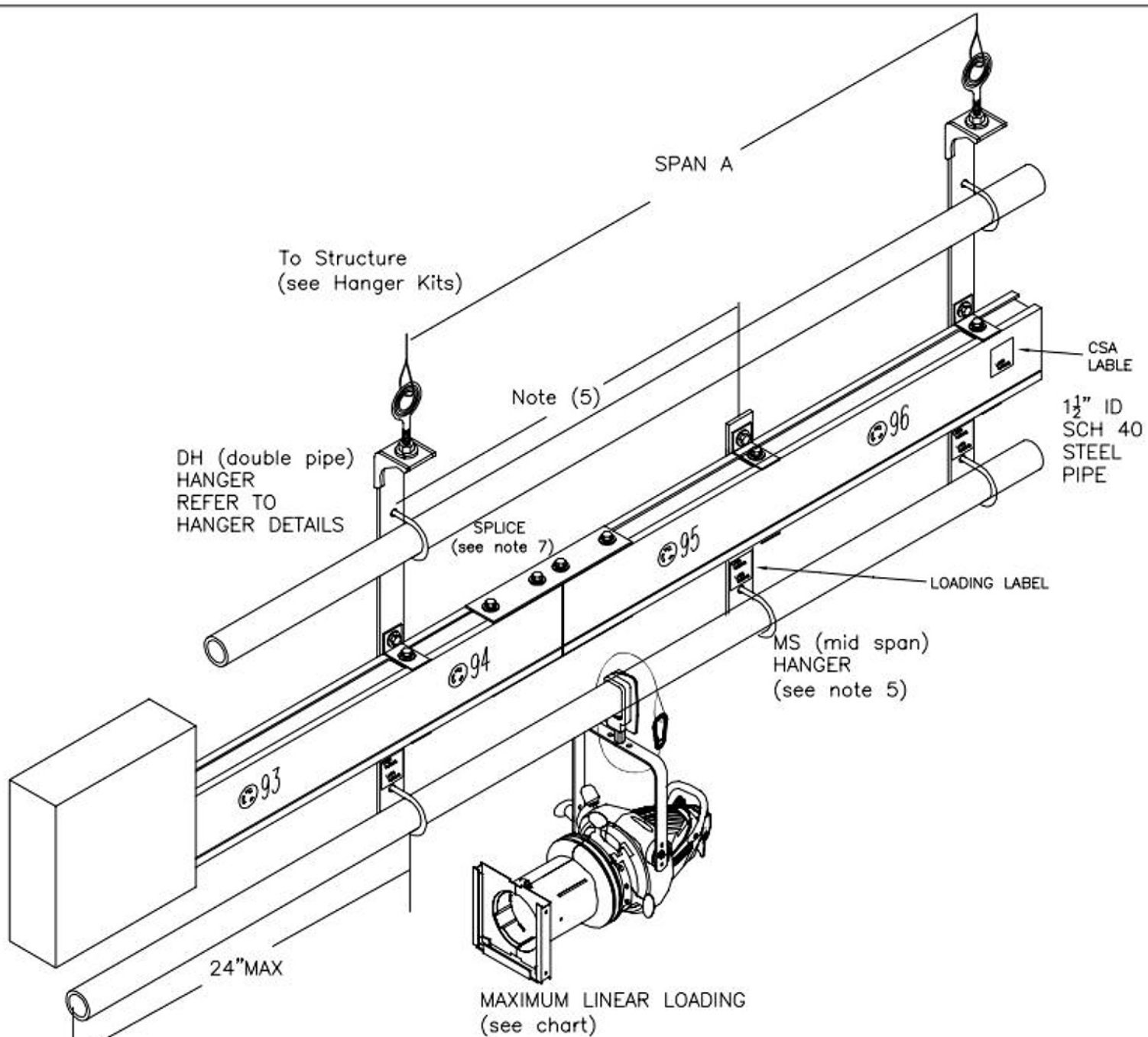
DATE  
DATE  
SCALE

JOB NAME

JOB #

SCALE

*HANGER KITS*



**NOTES**

- (1) RATINGS ARE ONLY APPLICABLE FOR USE WITH ARKADIUM AK-ALM-CMT CHANNEL MOUNT AND SH HANGER SYSTEM
- (2) RATINGS ARE ONLY APPLICABLE FOR USE WITH ARKADIUM JOIST HANGER AK/9215001-15 OR I BEAM HANGER AK/9215002-15
- (3) ALUMINUM CHANNEL IS NOT LOAD RATED. ONLY HANG FIXTURES FROM PIPE
- (4) TORQUE ALL HARDWARE TO RECOMMENDED RATINGS
- (5) MID SPAN SUPPORT HANGERS FOR ALUMINUM CHANNEL ARE REQUIRED FOR SPANS OVER 6'
- (6) ARKADIUM IS NOT RESPONSIBLE FOR FINAL ASSEMBLY
- (7) SPLICE REQUIRED FOR LENGTHS LONGER THAN 15' (4.5m)

LOADING CHART		
(sch 40 steel pipe)		
SPAN A	lbs/ft (kg/m)	
6'/1800mm	125	(56)
8'/2440mm	70	(31)
10'/3040mm	44	(20)



THIS DRAWING IS THE PROPERTY OF ARKADIUM INC. ANY USE/AND OR REPRODUCTION OR THE DESIGNS CONTAINED HEREIN WITHOUT WRITTEN CONSENT OF ARKADIUM INC IS PROHIBITED. ARKADIUM IS NOT RESPONSIBLE FOR THE UNAUTHORIZED USE AND/OR ALTERATION OF THIS DRAWING OR THE DESIGNS CONTAINED WITHIN THE DRAWING IS SUBJECT TO REVIEW AND FINAL APPROVAL BY THE PROJECTS ARCHITECT AND/OR ENGINEER.

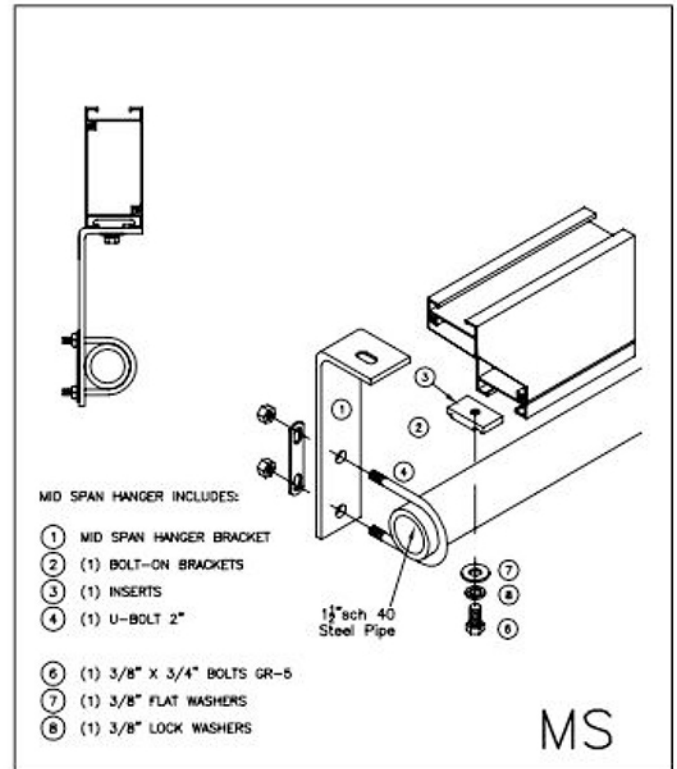
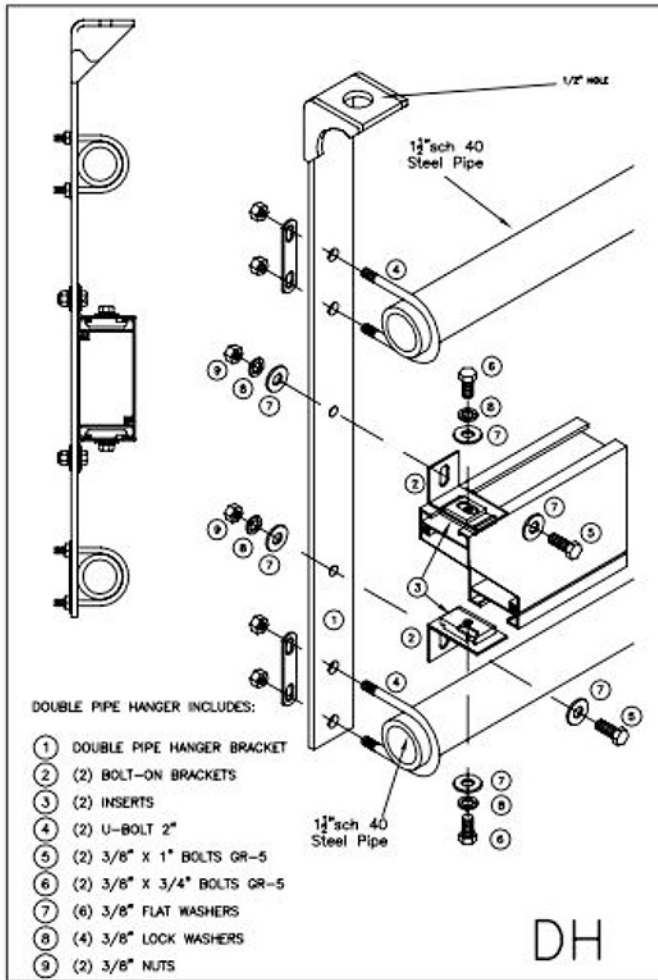
**ARKADIUM**

449 Laird Road, Unit #3,  
Guelph, Ontario  
N1G 4W1

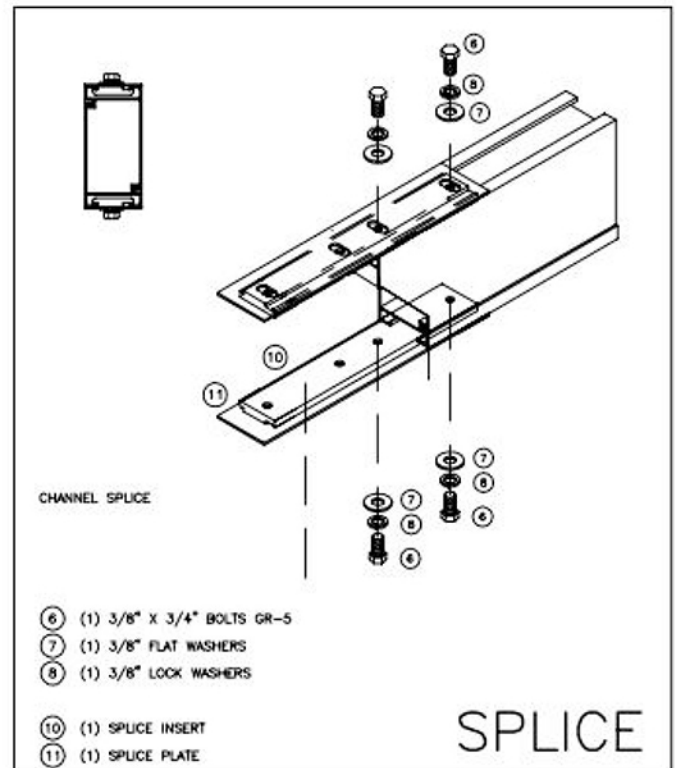
519-837-8367  
519-837-2487 (fax)

DRAWN BY:	TITLE	SHEET
	SYSTEM SYSTEM	JOB #
DATE May 2007	<i>CHANNEL MOUNT LOAD RATINGS</i>	
SCALE NTS		

# INSTALLATION NOTES



- Attach Bolt on Brackets [2] to channel at Drop and Mid Span Locations using Inserts [3] and Bolt Assembly [6,7,8] (Assure Insert [3] is properly seated in Channel)
- Attach SH and MH Hangers to channel at Drop and Mid Span Locations using Bolt Assembly [5,7,8,9] (Assure SH Hangers Match up with Drop Locations)
- Attach 1 1/2" sch 40 Pipe to Hangers using U-Bolt Assembly [4]
- True all Components and Evenly Tighten Hardware (DO NOT TORQUE)
- Hang Channel Mount Assembly on Drop Points using Screw Pin Shackles
- Hang Channel Mount Assembly on Drop Points using Screw Pin Shackles
- Check Trueness of Components and Tighten Hardware to Recommended Torque
- Trim Bottom Point (see below)



THIS DRAWING IS THE PROPERTY OF ARKADIUM INC. ANY USE/AND OR REPRODUCTION OR THE DESIGNS CONTAINED HEREIN WITHOUT WRITTEN CONSENT OF ARKADIUM INC IS PROHIBITED. ARKADIUM IS NOT RESPONSIBLE FOR THE UNAUTHORIZED USE AND/OR ALTERATION OF THIS DRAWING OR THE DESIGNS CONTAINED WITHIN. THE DRAWING IS SUBJECT TO REVIEW AND FINAL APPROVAL BY THE PROJECTS ARCHITECT AND/OR ENGINEER.

**ARKADIUM**

449 Laird Road, Unit #3,  
Guelph, Ontario  
N1G 4W1

519-837-8367  
519-837-2487 (fax)

DRAWN BY:

TITLE CHANNEL MOUNT HANGER ASSEMBLY  
SYSTEM SYSTEM

SHEET SHT

DATE

JOB NAME

JOB #

SCALE

SCALE

*HANGER KITS*